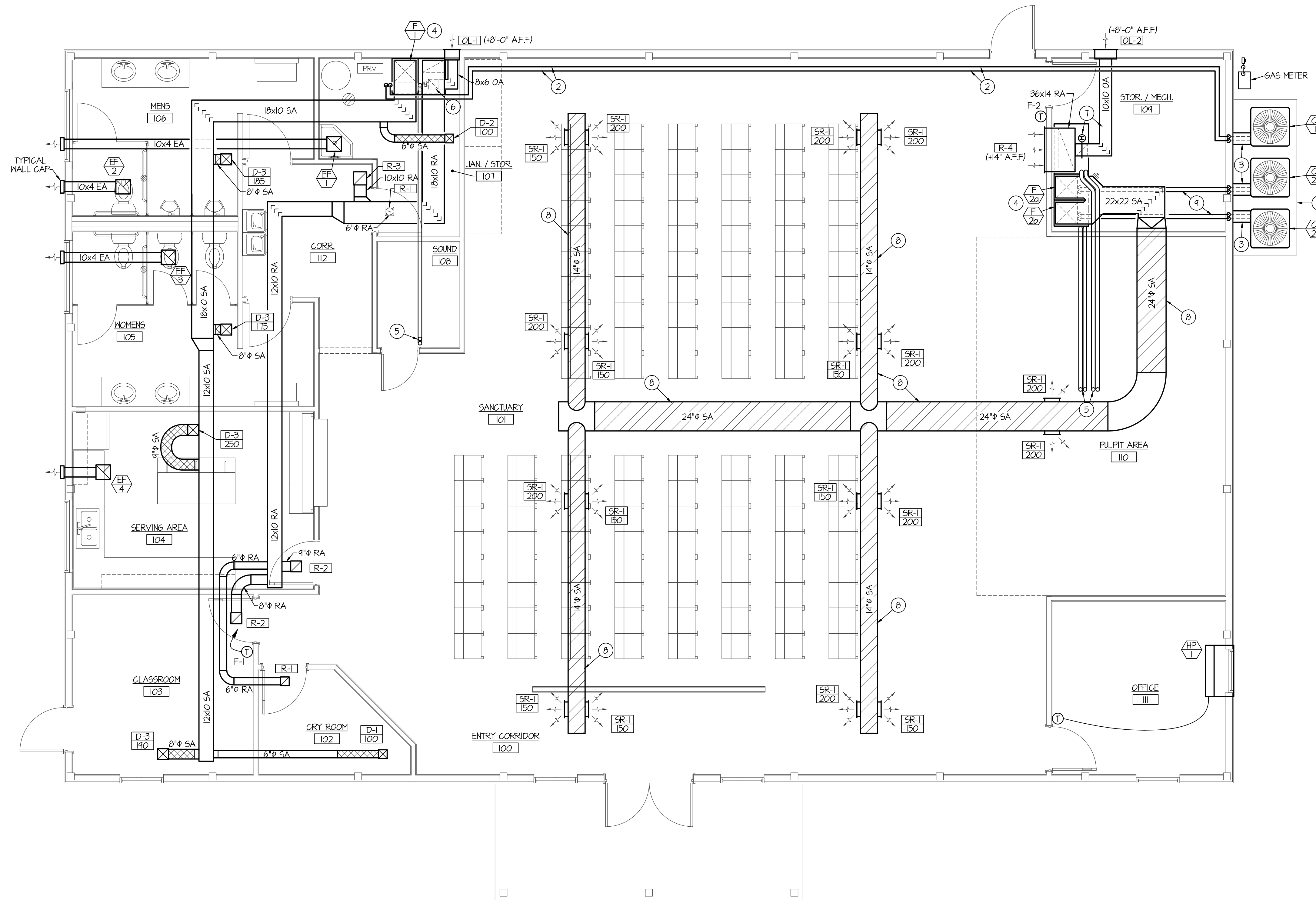


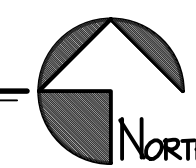
PLAN NOTES:

- 1 INSTALL NEW CONDENSING UNIT ON 4" THICK CONCRETE PAD. CONCRETE PAD BY GENERAL CONTRACTOR (SEE ARCH. PLANS).
- 2 RUN REFRIGERANT PIPING AS HIGH AS POSSIBLE EXPOSED AT CEILING OF SANCTUARY FROM FURNACE F-1 TO CONDENSING UNIT (U-1) AS SHOWN.
- 3 COVER EXPOSED REFRIGERANT PIPING WITH 18 GA GALVANIZED SHEET METAL COMPLETE WITH 24 GA. PREFINISHED METAL SKIN. SEE DETAIL ON SHEET M200.
- 4 INSTALL FURNACE ON 12" HIGH RETURN AIR PLENUM. SEE DETAIL ON SHEET M200.
- 5 RUN (2) 3" FURNACE FLUES UP THRU METAL ROOF NEAR PEAK OF ROOF TO VERTICAL VENT TERMINATION ASSEMBLY. SEAL ROOF PENETRATION WEATHERTIGHT. SEE DETAIL ON SHEET M200.
- 6 RUN 8x6 OUTSIDE AIR DUCT FROM LOUVER ON WALL AND CONNECT TO RETURN AIR PLENUM UNDER FURNACE. INSTALL MOTORIZED DAMPER, ACCESS PANEL AND HAND DAMPER IN VERTICAL PORTION OF DUCT. INTERLOCK MOTORIZED DAMPER WITH FURNACE OPERATION AND BALANCE HAND DAMPER TO 100 CFM.
- 7 RUN 10x10 OUTSIDE AIR DUCT FROM LOUVER ON WALL AND CONNECT TO RETURN AIR PLENUM UNDER FURNACE. INSTALL MOTORIZED DAMPER, ACCESS PANEL AND HAND DAMPER IN VERTICAL PORTION OF DUCT. INTERLOCK MOTORIZED DAMPER WITH FURNACE OPERATION AND BALANCE HAND DAMPER TO 500 CFM.
- 8 RUN EXPOSED SPIRAL DUCTWORK AS HIGH AS POSSIBLE IN SANCTUARY 101. COORDINATE WITH LIGHTING PLAN TO AVOID CONFLICTS.
- 9 RUN REFRIGERANT PIPING AS HIGH AS POSSIBLE IN MECH. ROOM AND DROP DOWN TO SERVE COOLING COIL ON FURNACE.



FLOOR PLAN - MECHANICAL

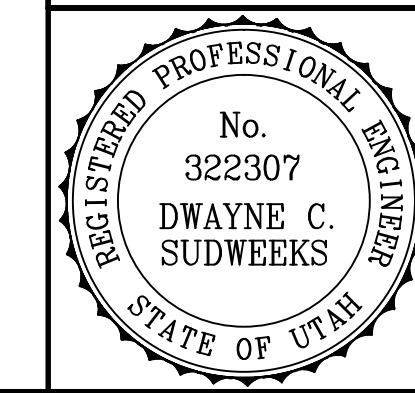
SCALE: 1/4" = 1'-0"



MECHANICAL LEGEND

SYMBOL	DESCRIPTION
(T)	ELECTRONIC THERMOSTAT
(S)	ELECTRONIC SENSOR
(E)	EQUIPMENT SYMBOL
(Hatched Box)	EXPOSED SPIRAL DUCTWORK
(HD)	HAND DAMPER
(RBD)	ROUND BRANCH DUCT WITH HAND DAMPER
(RRT)	RECTANGULAR SUPPLY AND RETURN AIR DUCT TAKE-OFF
(TV)	TURNING VANES
(DT)	DUCT TRANSITION
(IFD)	INSULATED FLEXIBLE DUCT
(SR)	SIDEWALL REGISTER SUPPLY OR RETURN AIR
(RA/EG)	RETURN AIR OR EXHAUST GRILLE
(CD)	CEILING DIFFUSER
(CMEF)	CEILING MOUNTED EXHAUST FAN

ORIGINAL DRAWING SIGNED BY: DWAYNE C. SUDWEEKS
 DATE ORIGINAL SIGNED: Jan 08, 2014
 ORIGINAL ON FILE AT ENGINEERED SYSTEMS ASSOCIATES
 1355 EAST CENTER, POCATELLO, IDAHO 83201



Engineered Systems Associates
 1355 EAST CENTER
 POCATELLO, IDAHO 83201
 PHONE: (208) 233-0501
 FAX: (208) 233-0529
 EMAIL: esa@engsystems.com
 ESA JOB NUMBER: 18102

PROJECT: New Tenant Improvement For: WASATCH COWBOY CHURCH
 5603 SOUTH 6700 WEST
 HOOPER, UT 84315
 MOUNTAIN WEST ARCHITECTURE | 143 25TH STREET - OGDEN, UT 84401 | PH: 801-388-6022 | www.mountainwestarchitecture.com

SHEET TITLE: MECHANICAL FLOOR PLAN
 SHEET NUMBER: M100

DO NOT SCALE DRAWING